



# SUMASA OFFICE & FACTORY



# Suministradora de Ascensores SAU SUMASA

## **Office and Factory**

Vapor 68-76 – 08212 SANT LLORENÇ SAVALL (Barcelona) – Spain

## **Barcelona Spare Parts:**

Selva de Mar 78, 08019 (Barcelona) – Spain

## **Madrid Spare Parts:**

Resina, 41 Nave 15 – 28021 MADRID (Villaverde) – Spain

Tel. +34 902 202 227

Fax +34 902 202 228

[sumasa@e-sumasa.com](mailto:sumasa@e-sumasa.com)

[www.e-sumasa.com](http://www.e-sumasa.com)



# SUMASA



- Sumasa is a company created and dedicated to the service of the installer and maintainer of elevators, specialized in the design and production of tailor-made elevators, from 100kg up to 30.000kg, and structures, as well as the production of all type of standard lifts.
- Since our founding, over 35 years ago, we have established new delegations for spare parts, components and modernizations in Madrid and Barcelona with permanent stock of all types of replacements and components for multi-brand lifts. At the present time, Sumasa has international presence in more than 45 countries.

# SUMASA



The basis for this success is the flexibility with which we deal with our customers, adapting to their needs, as well as the constant product innovation and technical solutions to advance in accordance to the market requirements.

Sumasa dispose of a highly qualified engineering with custom software that enables the development of any rehabilitation project for buildings without elevator, reaching pits from 160mm and reduced headroom's from 2350mm.

- We have solutions for narrow shafts from 670mm wide or on the other hand, with reduce depth of 600 mm, also, with the possibility to produce elevators with irregular shapes. We keep on developing energy-efficient elevators for new buildings or platform lifts (Homelifts), either hydraulic or electric Gearless.

# BRIDGE IN SAN JOSÉ (COSTA RICA)



# BRIDGE IN SAN JOSÉ (COSTA RICA)



# BRIDGE IN SAN JOSÉ (COSTA RICA)



# BRIDGE IN SAN JOSÉ (COSTA RICA)





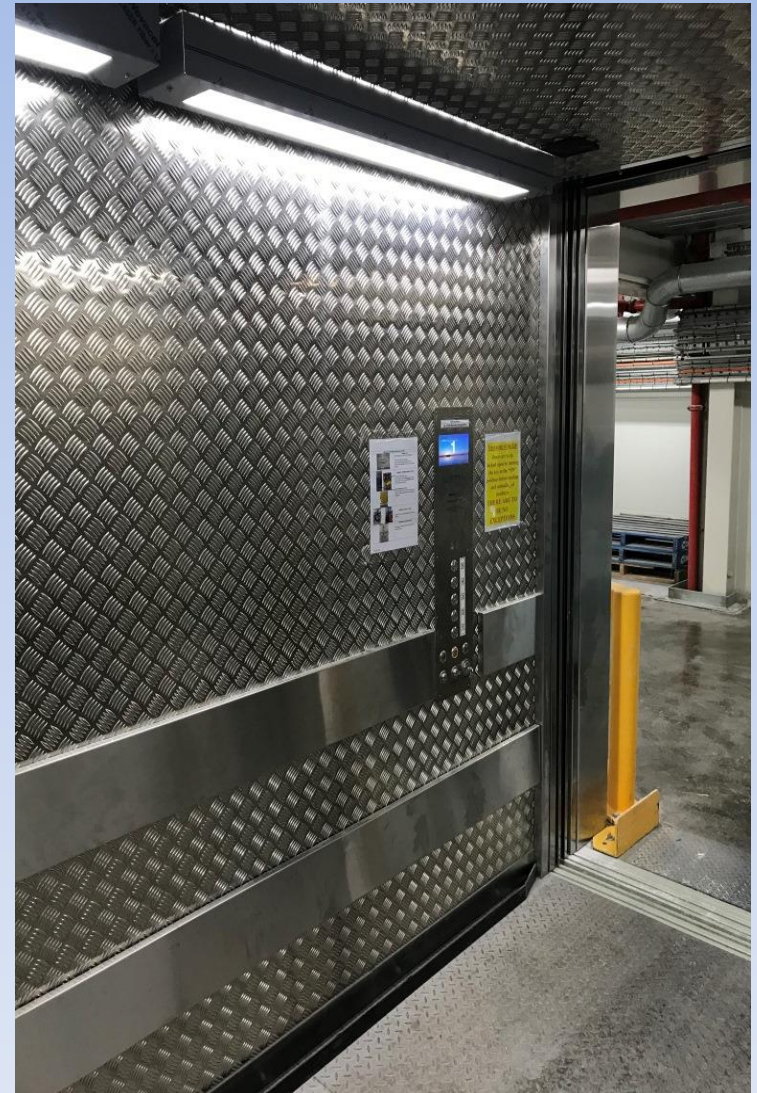
# BRIDGE IN SAN JOSÉ (COSTA RICA)



# BRIDGE IN SAN JOSÉ (COSTA RICA)

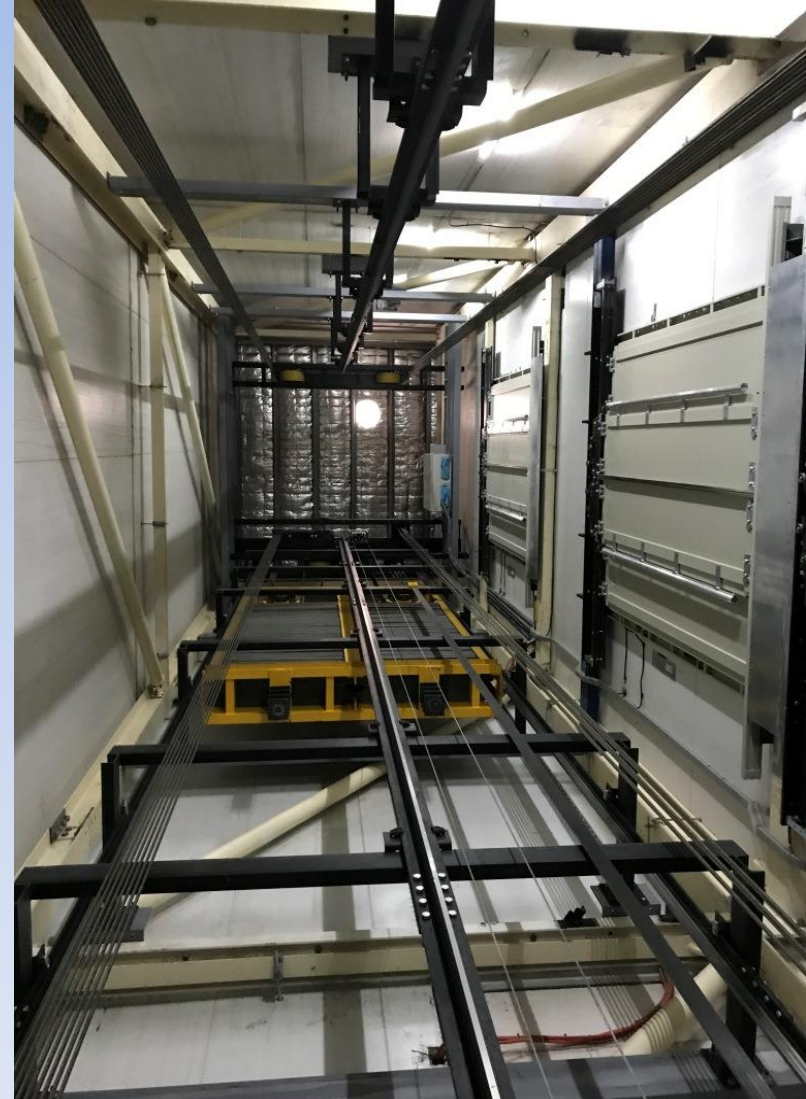


# ALLIED MILLS FACTORY (SYDNEY) AUSTRALIA



sumasa

# ALLIED MILLS FACTORY (SYDNEY) AUSTRALIA



# ALLIED MILLS FACTORY (SYDNEY) AUSTRALIA



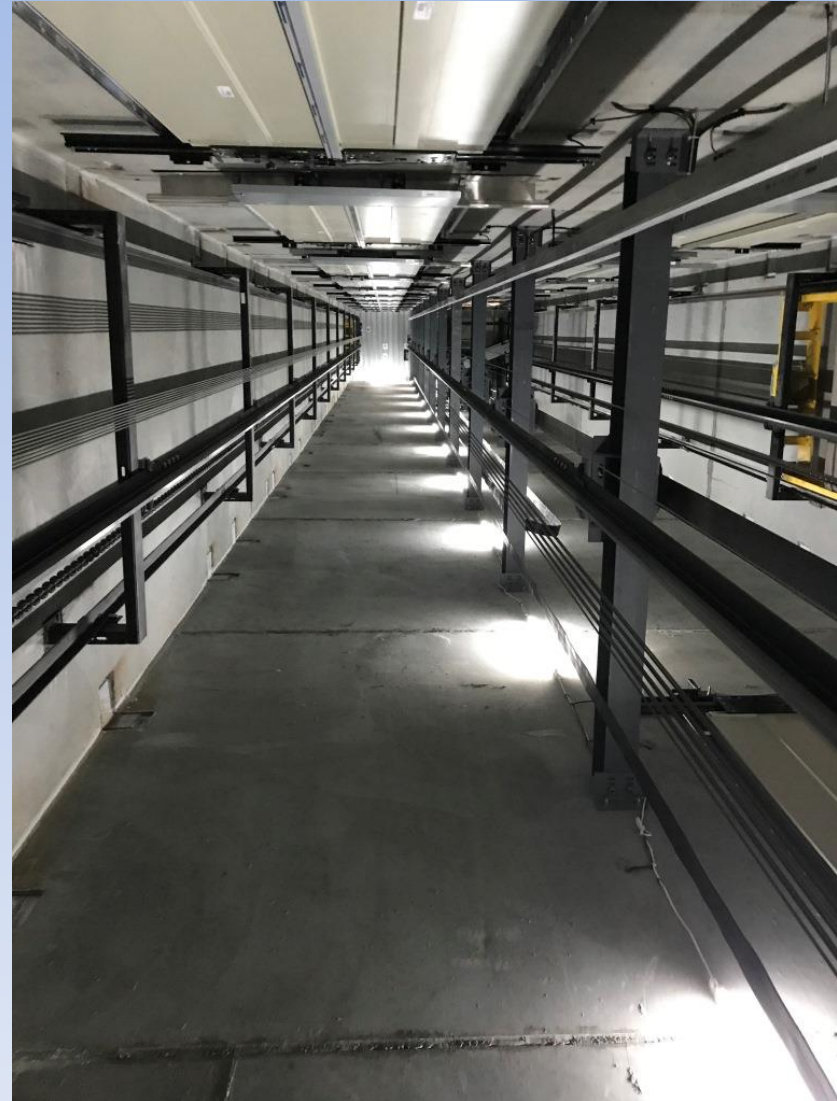
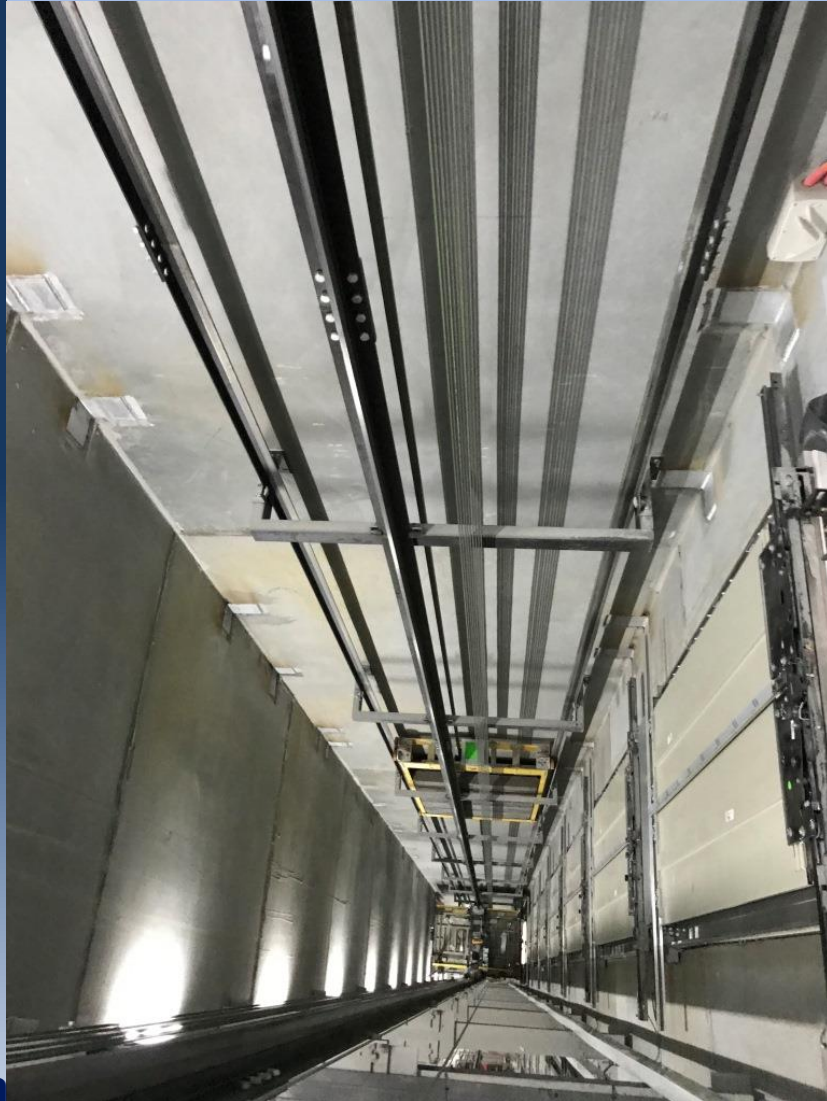
# MILTON TOWER (BRISBANE) AUSTRALIA



# MILTON TOWER (BRISBANE) AUSTRALIA



# MILTON TOWER (BRISBANE) AUSTRALIA





# MILTON TOWER (BRISBANE) AUSTRALIA



# MILTON TOWER (BRISBANE) AUSTRALIA



# LANE COVE, AGED CARE (SYDNEY) AUSTRALIA



# LANE COVE, AGED CARE (SYDNEY) AUSTRALIA



# LANE COVE, AGED CARE (SYDNEY) AUSTRALIA



# MONASH UNIVERSITY (MELBOURNE) AUSTRALIA



# MONASH UNIVERSITY (MELBOURNE) AUSTRALIA



# MONASH UNIVERSITY (MELBOURNE) AUSTRALIA





# FEDERATION SQUARE (MELBOURNE) AUSTRALIA



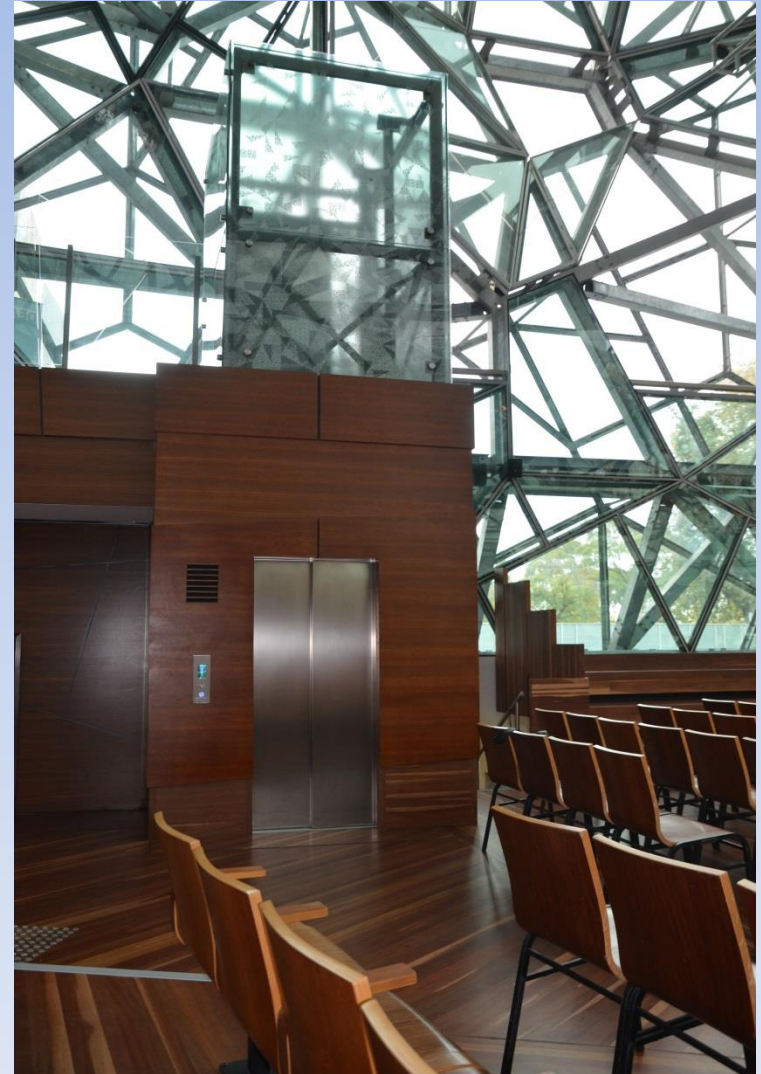
# FEDERATION SQUARE (MELBOURNE) AUSTRALIA



# FEDERATION SQUARE (MELBOURNE) AUSTRALIA



# FEDERATION SQUARE (MELBOURNE) AUSTRALIA



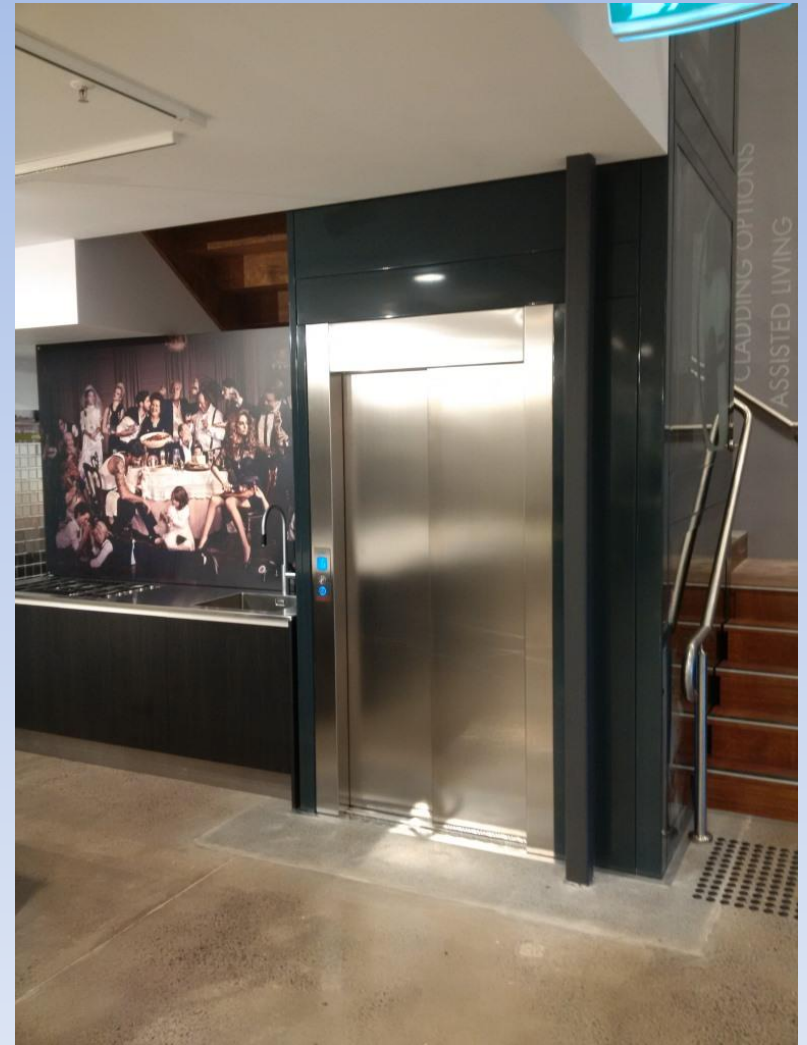
# FEDERATION SQUARE (MELBOURNE) AUSTRALIA



# BUNNINGS STORE (BRISBANE) AUSTRALIA



# BUNNINGS STORE (BRISBANE) AUSTRALIA



# BEECROFT BRIDGE (SYDNEY) AUSTRALIA





# BEECROFT BRIDGE (SYDNEY) AUSTRALIA



# HOMELIFT (DOHA) QATAR



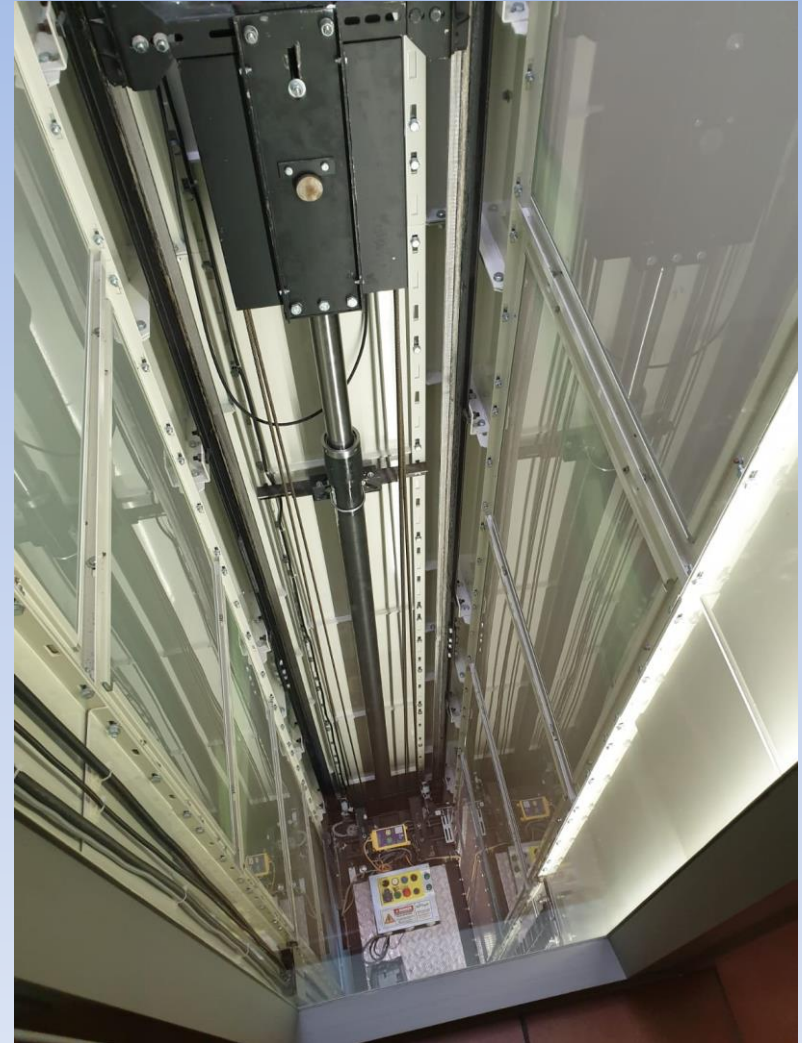
# HOMELIFT (DOHA) QATAR



# HOMELIFT (NICE) FRANCE



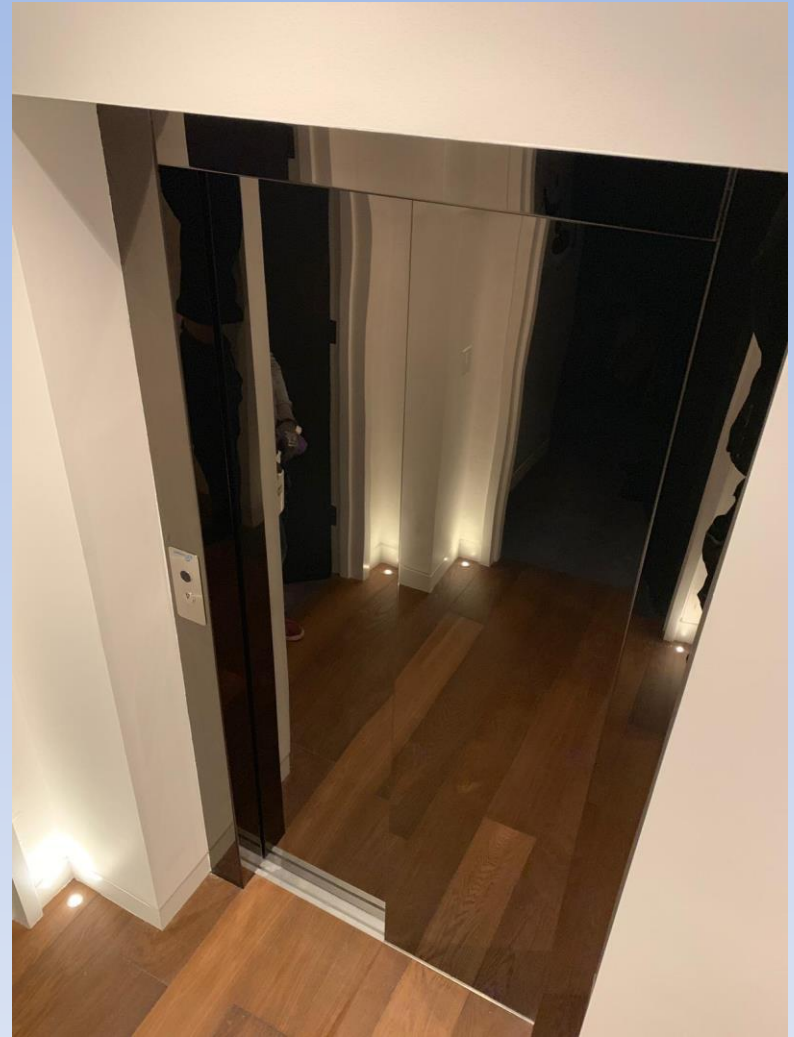
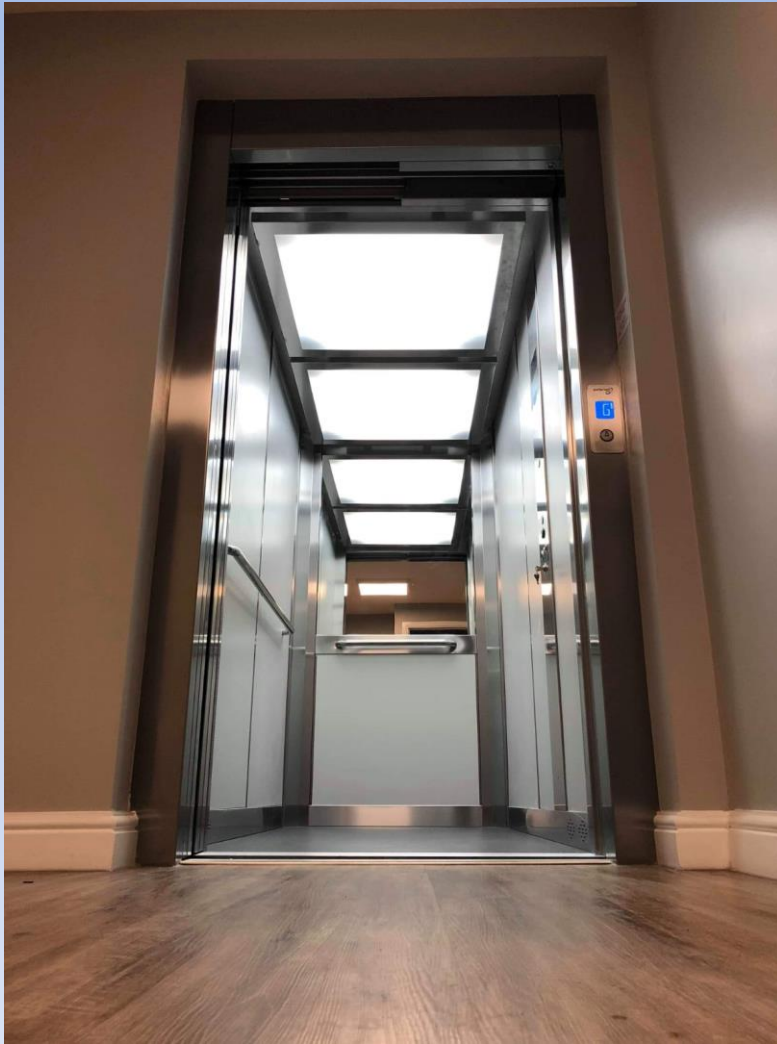
# HOMELIFT (PARIS) FRANCE



# HOMELIFT (PARIS) FRANCE



# HOMELIFT (LYON) FRANCE



# UNIVERSITY (HAMBURG) GERMANY





# UNIVERSITY (HAMBURG) GERMANY



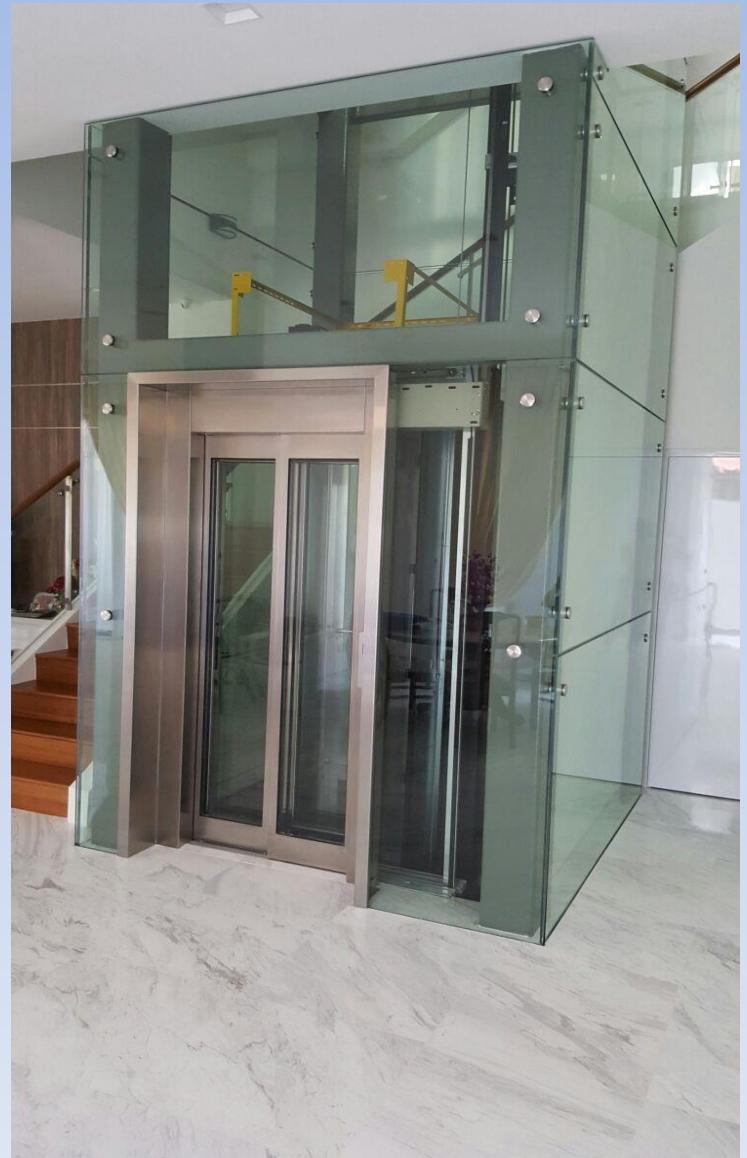
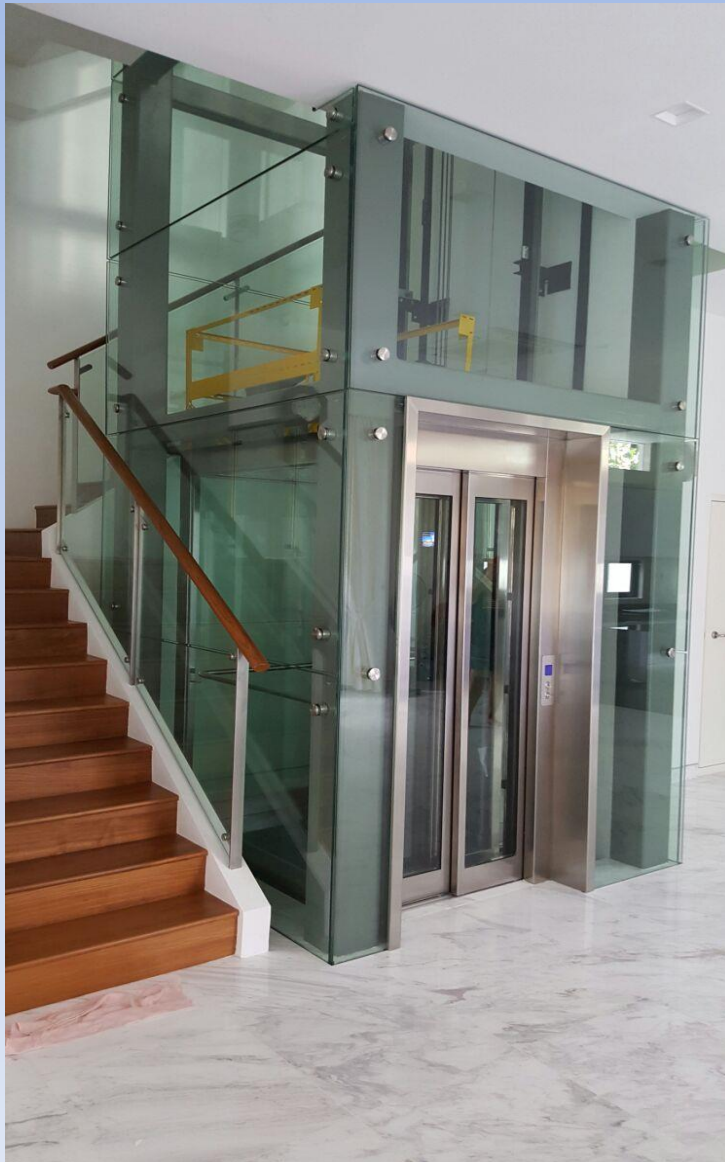
# SCHOOL (FELNSBURG) GERMANY



# SCHOOL (FELNSBURG) GERMANY



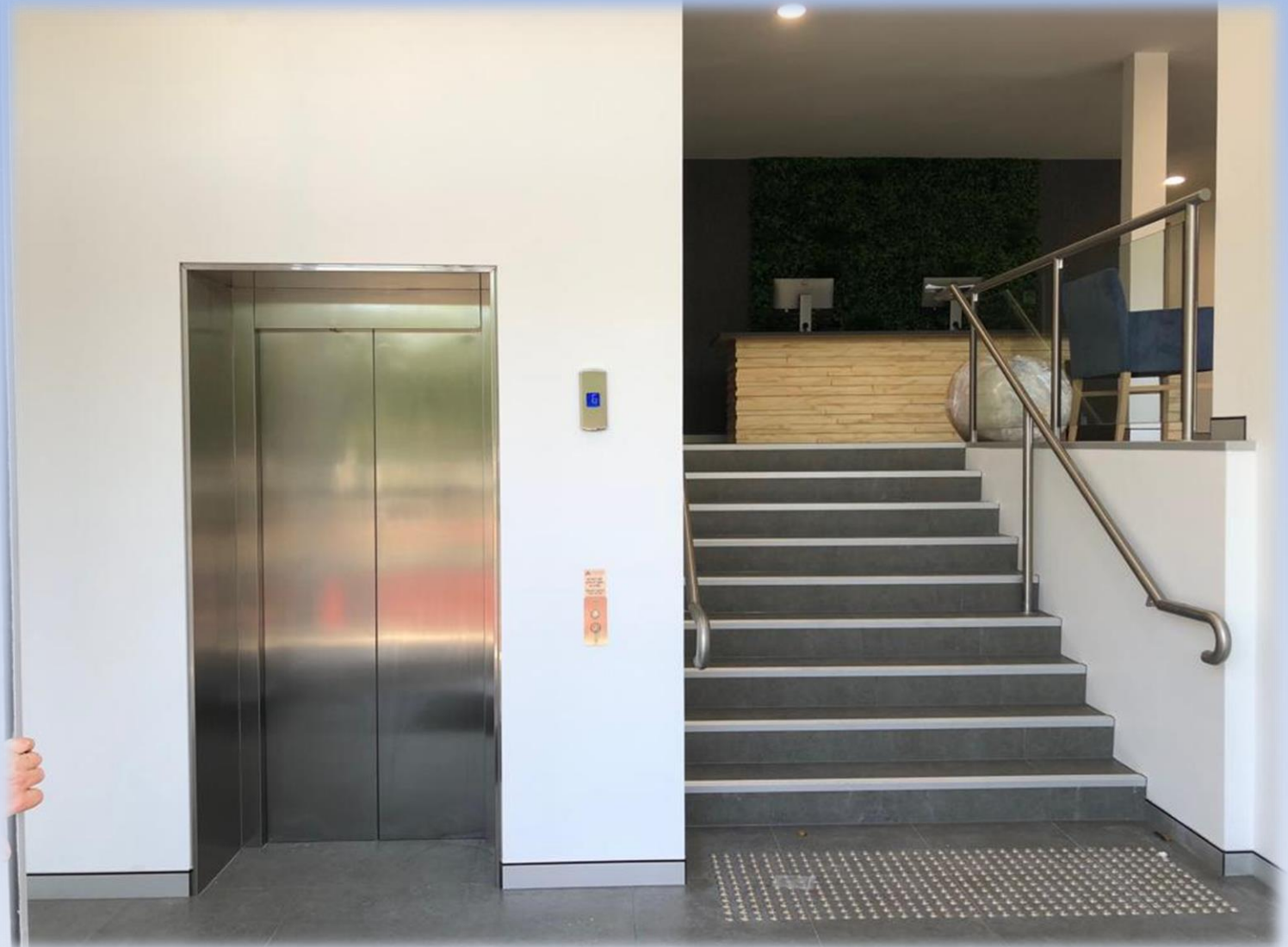
# HOMELIFT (SINGAPORE)



# HOMELIFT (SINGAPORE)



# OFFICE (BRISBANE) AUSTRALIA



# FACTORY LONDON (UK)



# FACTORY LONDON (UK)





# FACTORY LONDON (UK)



# SYDNEY (AUSTRALIA)



# BARCELONA (SPAIN)



# BARCELONA (SPAIN)



# MADRID (SPAIN)



# BARCELONA (SPAIN)



# SYDNEY (AUSTRALIA)



# SYDNEY (AUSTRALIA)





# SYDNEY (AUSTRALIA)



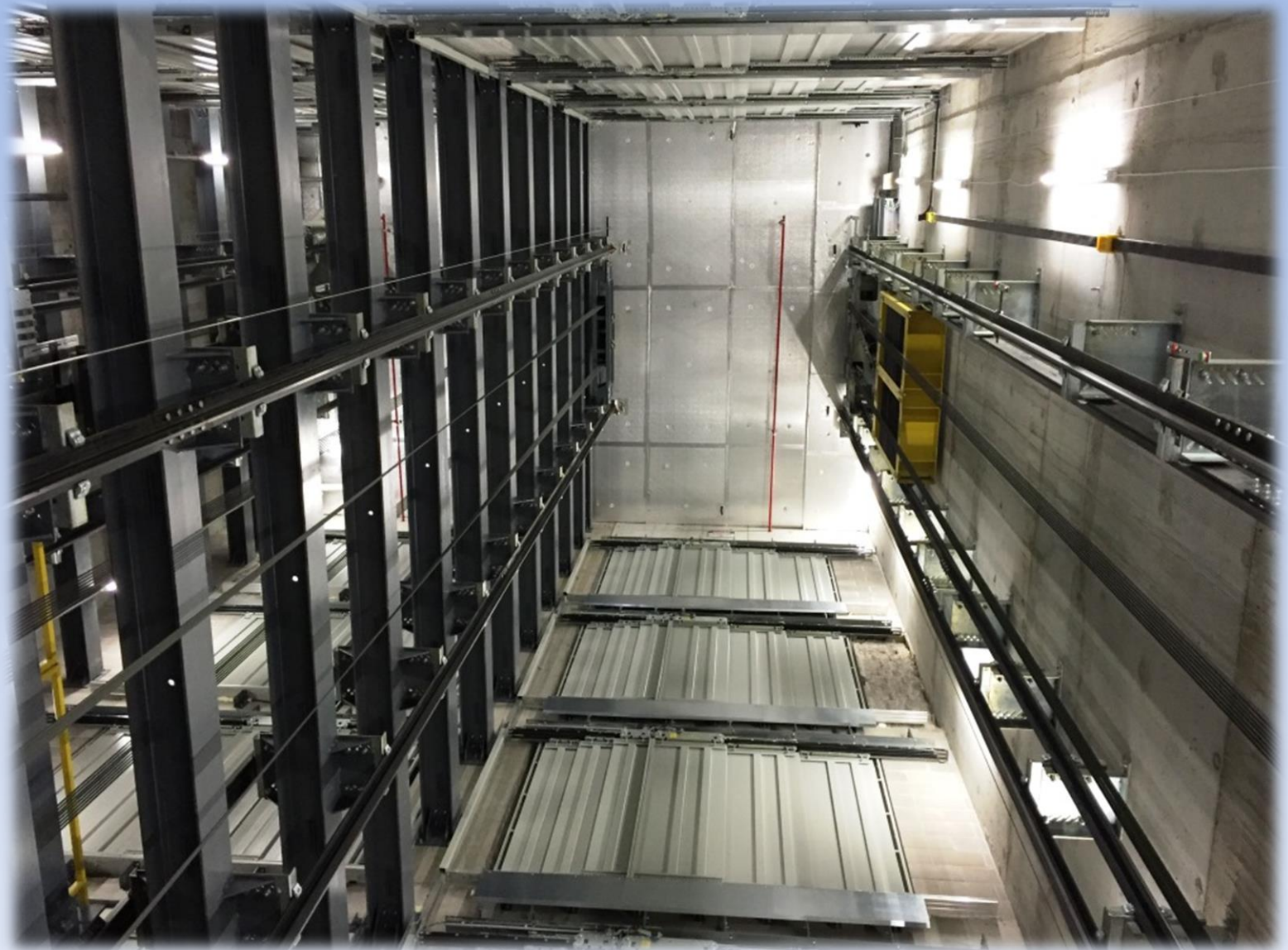
# BARCELONA (SPAIN)



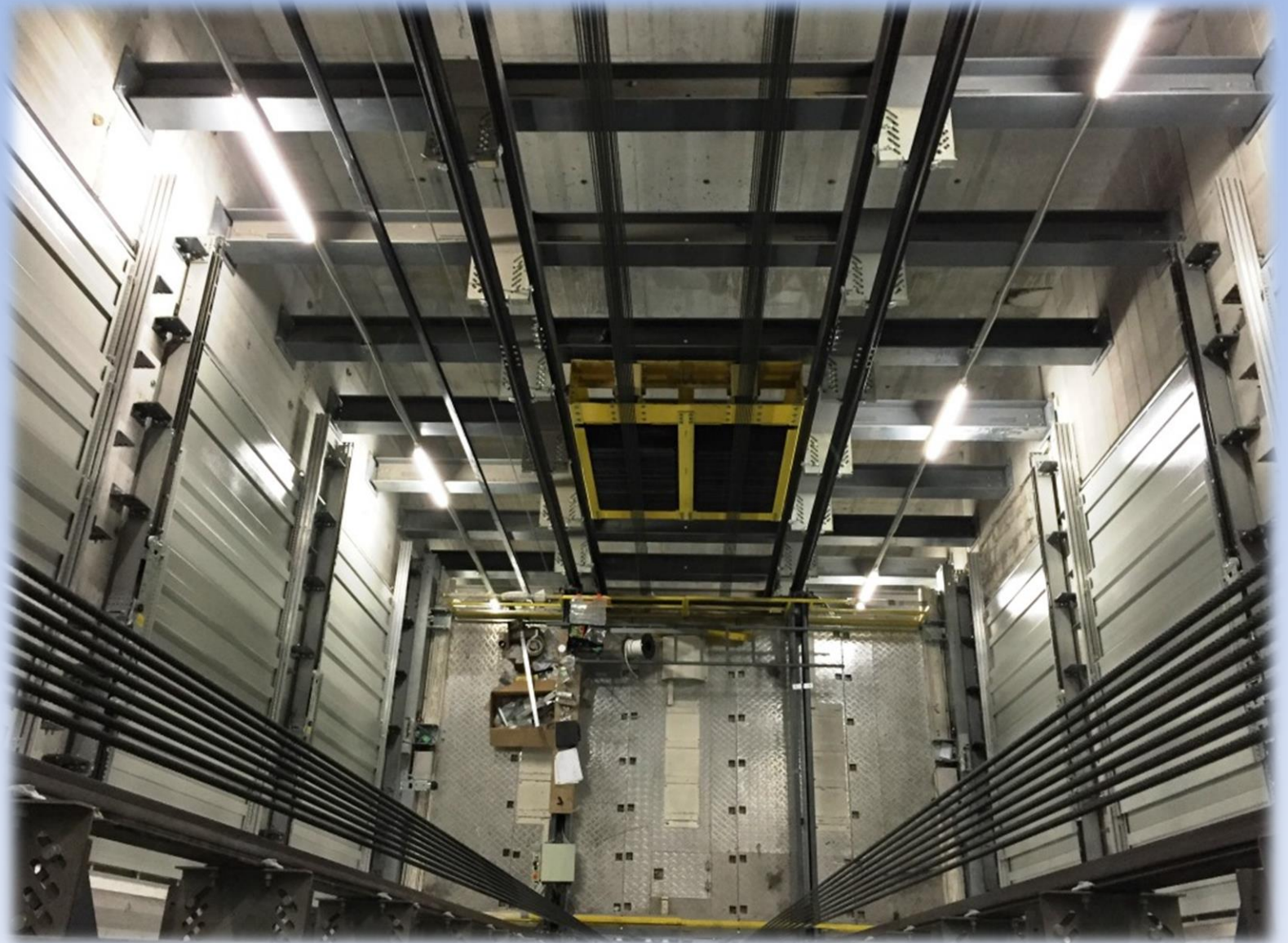
# VALENCIA (SPAIN)



# AUSTRALIA (MELBOURNE)



# AUSTRALIA (MELBOURNE)



# MALAGA (SPAIN)



# AUSTRALIA (PERTH)



# DENTAL CLINIC (BARCELONA)





# WARSAW (POLAND)



# SUMASA CABINS



# SUMASA CABINS



# SUMASA CABINS



# SUMASA CABINS



# SUMASA CABINS



# SUMASA CABINS



# SUMASA CABINS





# SUMASA CABINS



# SUMASA CABINS



# SUMASA CABINS



# SUMASA CABINS



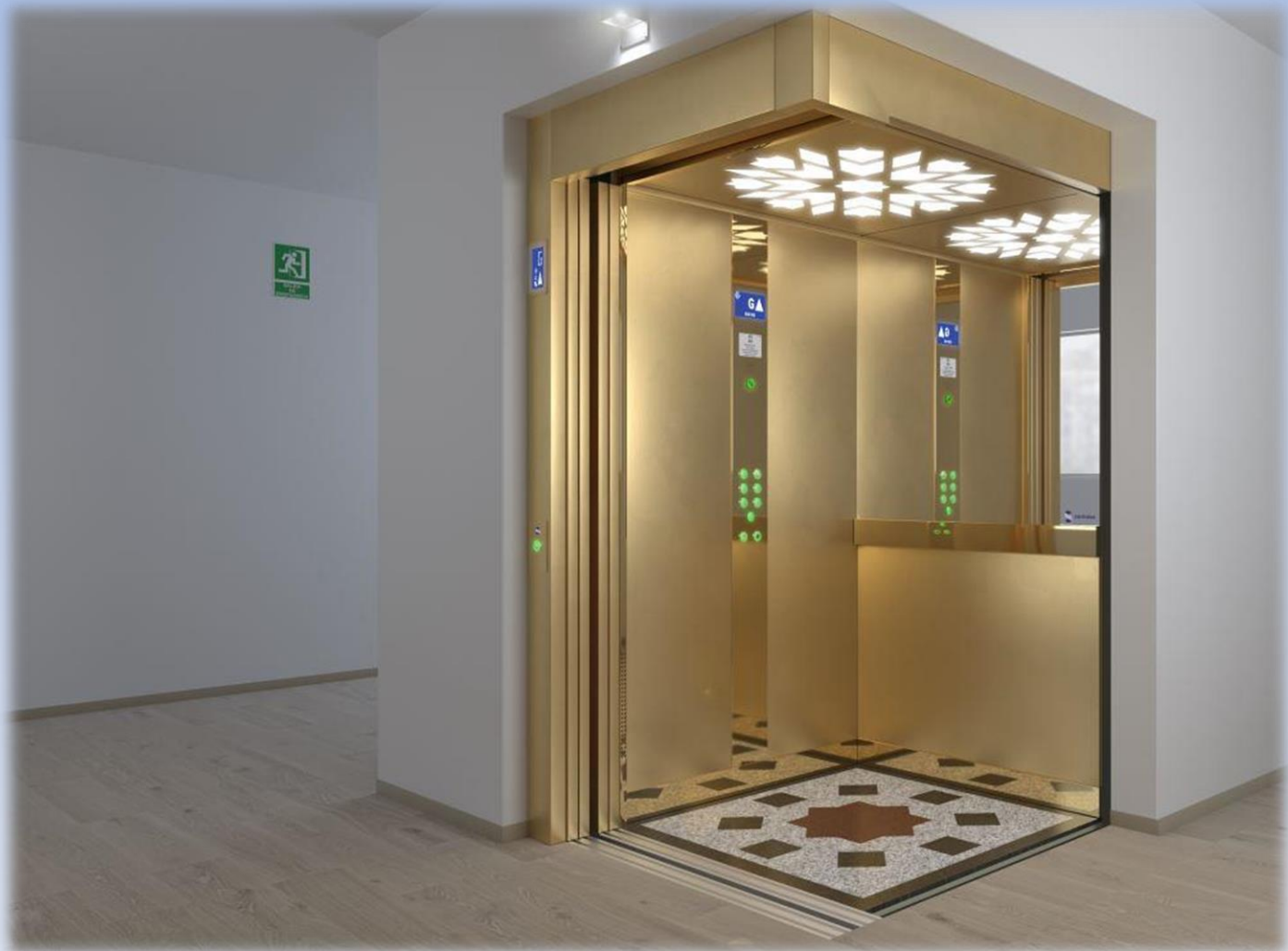
# SUMASA CABINS



# SUMASA CABINS



# SUMASA CABINS



# SUMASA CABINS





# CERTIFICATIONS





**TÜVRheinland**<sup>®</sup>

## CERTIFICATE

The Certification Body of Quality Management Systems  
**TÜV Internacional Grupo TÜV Rheinland, S.L.**  
 hereby certifies that the company

**SUMASA**  
**(SUMINISTRADORA DE ASCENSORES, S.A.)**  
 for their location in  
**C/ Vapor, 68-76**  
**E-08212 Sant Llorenç de Savall**  
**(Barcelona)**  
 has established and applies a Quality Management System for the activities of

**Design, manufacturing and commercialization of elevators and structures**

in accordance with the requirements of the standard  
**UNE – EN ISO 9001:2000**  
 This certificate is valid until: **2011-10-02**  
 Certification Registration No: **0.04.08052**

Madrid, 2008-11-14





Head of the Certification Body of Quality Management Systems  
 TÜV Internacional Grupo TÜV Rheinland, S.L.

[www.tuv.es](http://www.tuv.es)

## ZERTIFIKAT


**EG-Baumusterprüfung**  
**EG-Richtlinie 2006/42/EG, Artikel 12, Absatz 3b**  
**Maschinen**  
**Zertifikatsregistrier-Nr.: 01/205/0817/12**  
 Die Zertifizierungsstelle für Maschinen NB 0035 der TÜV Rheinland Industrie Service GmbH bescheinigt hiermit dem Unternehmen  
**Sumasa (Suministradora de Ascensores S.A.)**  
**C/Vapor, 68-76**  
**08212 sant Llorenç Savall**  
**Spanien**  
 die Übereinstimmung des Produktes  
**Vertikaler Plattformaufzug für Behinderte**  
**Typ SEHL – 2010 H**  
Technische Daten:  
 Ident-Nr. 0001  
 Antriebssystem: Hydraulik  
 Max. Hubhöhe: 9 m  
 Anzahl Haltestellen: 4  
 Max. Hublast: 450kg / 5 Personen  
 Max. Hubgeschwindigkeit: 0.15 m/s

mit den Anforderungen nach Anhang I der Richtlinie 2006/42/EG über Maschinen und zur Änderung der Richtlinie 95/16/EG des Europäischen Parlaments und des Rates vom Mai 2006 zur Angleichung der Rechts- und Verwaltungsvorschriften der Mitgliedsstaaten für Maschinen.  
 Der Nachweis wurde erbracht durch eine EG-Baumusterprüfung, Bericht Nr.: AE.COL.00007-10 vom 21.12.2011 und ist gültig unter Beachtung der in diesem Dokument aufgeführten Erfordernisse.  
 Dieses Zertifikat ist gültig bis zum **09.04.2017**.




Berlin, den 03.04.2012

Zertifizierungsstelle  
 notifiziert unter Nr. 0035  
 der Leiter / Zertifizierer



Dipl.-Ing. Bernhard Frejo

TÜV Rheinland Industrie Service GmbH  
 Ahornstraße 56, 12103 Berlin  
 Telefon +49 (0)30 75 62 – 1057, Fax +49 (0)30 75 62 – 13 70



**TÜVRheinland**<sup>®</sup>  
 Genau. Richtig.

# CERTIFICATIONS



C/ Vapor, 68-76  
Tlf. 902.202.227  
Fax 902.202.228  
08212 Sant Llorenç Savall (Barcelona - Spain)  
sumasa@e-sumasa.com

## DECLARACIÓN DE CONFORMIDAD



SUMASA, empresa homologada por TÜV RHEINLAND® según la directiva de ascensores 95/16/CE, anexo XIII (módulo H) y con n° de certificado 01 208 08052, certifica que fabrica ascensores cumpliendo los siguientes requisitos:

- Directiva 95/16/CE (29-06-1995)
- Normas armonizadas:
  - o EN81-1, EN81-2, EN81-21, EN81-70 y EN81-71 (clase 1 y clase 2)

En Sant Llorenç Savall, 8 de JULIO de 2011

JORDI PONS CALLEJO  
Director Técnico



## Certificado

No de certificado: 01 208 08052

Fecha del certificado:

TÜV CERT Organismo de Certificación para Ascensores y sus Componentes de Seguridad de TÜV Rheinland Industrie Service GmbH

Organismo Notificado con nº 0035

Certifica de acuerdo con el procedimiento de TÜV CERT que:  
**SUMASA (Suministradora de ascensores, S.A.)**

Pol. Ind. Les Conques-C/Vapor 68-76

E - 08212 Sant Llorenç de Savall (Barcelona)

ha establecido y aplica un sistema de calidad para

**Diseño, producción, montaje, instalación y control final de ascensores de acuerdo con la Directiva de Ascensores.**

Se realizó una auditoría Nr. 30172029.

Se comprobó que los requisitos de la

**Directiva de Ascensores 95/16/CE, Anexo XIII** se han cumplido.

VÁLIDO HASTA:

2012-07-18

Reportal: Alemania 2C10-09-09

Dr.-Ing. Peter Glöbe  
Tel. +49 202 5275-221

TÜV Rheinland certification office  
for elevators and their safety components, from TÜV Rheinland Industrie Service GmbH  
Registered under no. 0035

TÜV Rheinland Industrie Service GmbH, Am Glöbeck Stein, D-61105 Cologne, Germany

www.tuv.com



# Suministradora de Ascensores SAU SUMASA

General Manager:

Jose Pons [joseppons@e-sumasa.com](mailto:joseppons@e-sumasa.com)

Technical Director:

Jordi Pons [jordipons@e-sumasa.com](mailto:jordipons@e-sumasa.com)

Export Manger:

Marc Mas [marc.mas@e-sumasa.com](mailto:marc.mas@e-sumasa.com)

Production :

Rafael Redondo [produccion@e-sumasa.com](mailto:produccion@e-sumasa.com)

Quality department:

Eduard Meifren [oficinatecnica@e-sumasa.com](mailto:oficinatecnica@e-sumasa.com)

Finance Direction:

Silvia Garcia [administracion@e-sumasa.com](mailto:administracion@e-sumasa.com)



[www.e-sumasa.com](http://www.e-sumasa.com)

